	<b>Service Bulletin</b> <b>New Lever Handle</b>	
<b>Release Date: Nov. 20. 2014</b>	<b>Models Affected:</b>	<b>Bulletin Number</b>
<b>Prepared by: Stefan Seise, Michael Donhauser, Gabriel Arranz</b>	<b>Tomahawk S-Series &amp; IC3 powered by ICG</b> <b>Matrix S-Series &amp; IC3 powered by ICG</b>	<b>SB-007</b>

## EARLIEST AFFECTED S/N:

---

- TAKB0002343-14F Tomahawk S-Series powered by ICG
- TALB0006071A-14G Implementation for Tomahawk IC3 powered by ICG
- LALB0002285A-14F Implementation for Matrix IC3 powered by ICG
- Also available for S-Series Matrix branded from production start 2008 / Livestrong branded
- Retrofitable part for all S-Series and Matrix IC3 bikes starting from January 2009

## SYMPTOM

---

- Lever handle breaks after applying too much force to the lever.

## REASON



---

- Size of the lever handle allows the user to apply too much force to the lever handle, breaking the plastic handle.

## SOLUTION

---

- Changing the form of the lever handle, so the user can't apply too much force when adjusting HB & SP sliders.

Old design	New design	Different
		From long shape to round shape

## Solutions for equipment in the field or in your warehouse

1	Date implemented	Jul.01.2014	5	Video available	N/A
2	Field service suggestion	<input checked="" type="checkbox"/> case by case <input type="checkbox"/> club by club <input type="checkbox"/> rework all	6	Old part number	180-01-00007-01
3	Units in warehouse	<input type="checkbox"/> no action required <input checked="" type="checkbox"/> replace all	7	New part number	180-01-00022-01
4	Parts in stock	<input checked="" type="checkbox"/> running change <input type="checkbox"/> immediate change	8	Retrofit	<input checked="" type="checkbox"/> Yes <input type="checkbox"/> No

### REPLACEMENT PROCEDURE:

#### Parts Required:

- 180-01-00002-02 LOCK HANDLE ASSEMBLY

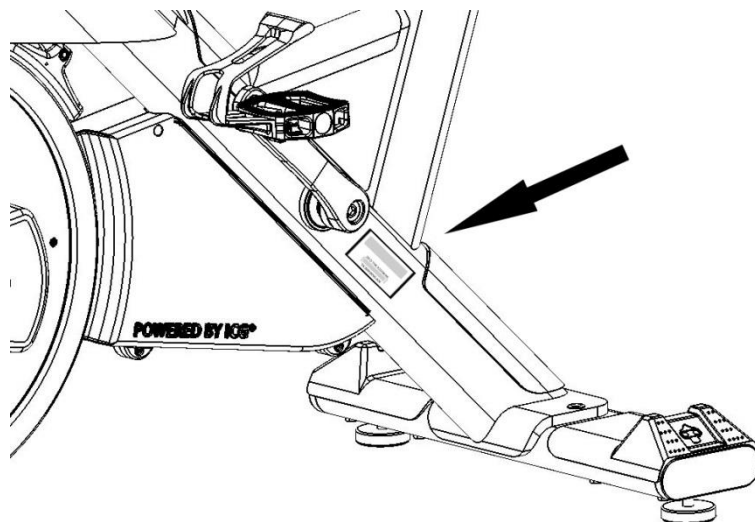
#### Required tools:

- 1x 4mm Allen key

### HANDLEBAR (HB) & SEATPOST (SP) LEVER HANDLE RETROFIT

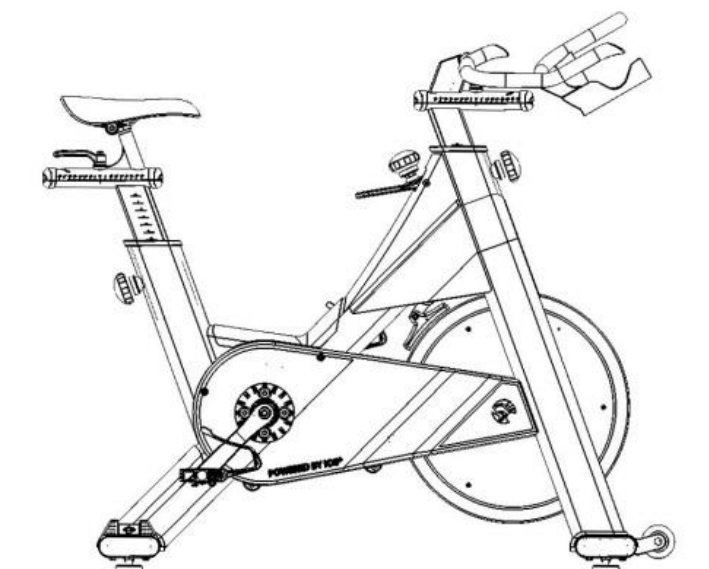


The product article number and product serial number information can be found on the tag plate label positioned on the lateral frame tube as shown below. Please make sure to identify the product prior to performing any repair work.



### Warning!

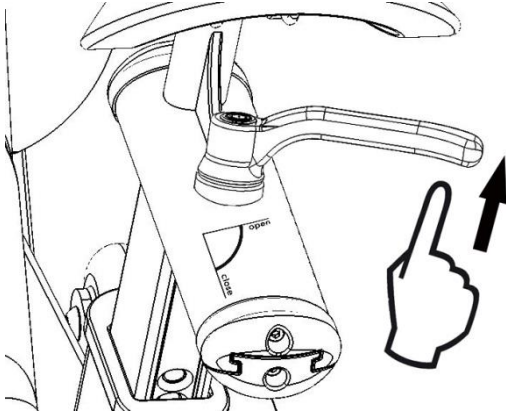
Please ensure that the bike is in a stable position and properly secured while repair work is being performed.



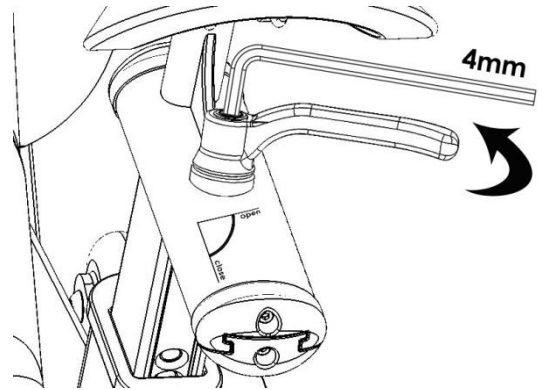
**1) Retrofit process for the handlebar and saddle adjustment lock lever**

**\*\*\* The T-nut and retainer spring situated between upper / lower slider will be reused.**

- a) Place the lever in the open position in order to make the following process easier.
- b) Unscrew the bolt of the adjustment lever handle completely using the 4mm Allen key.



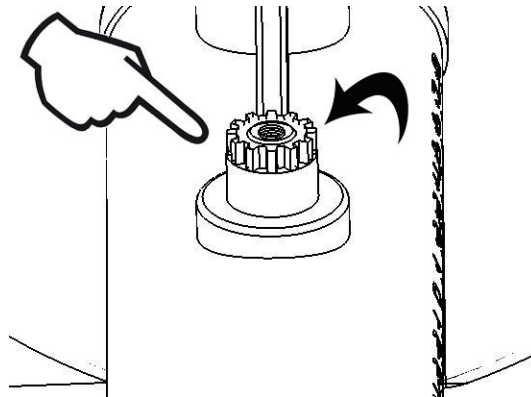
a)



b)

**2) Remove the old adjustment lever handle from the upper slider**

- a) Remove the adjustment bolt by hand.



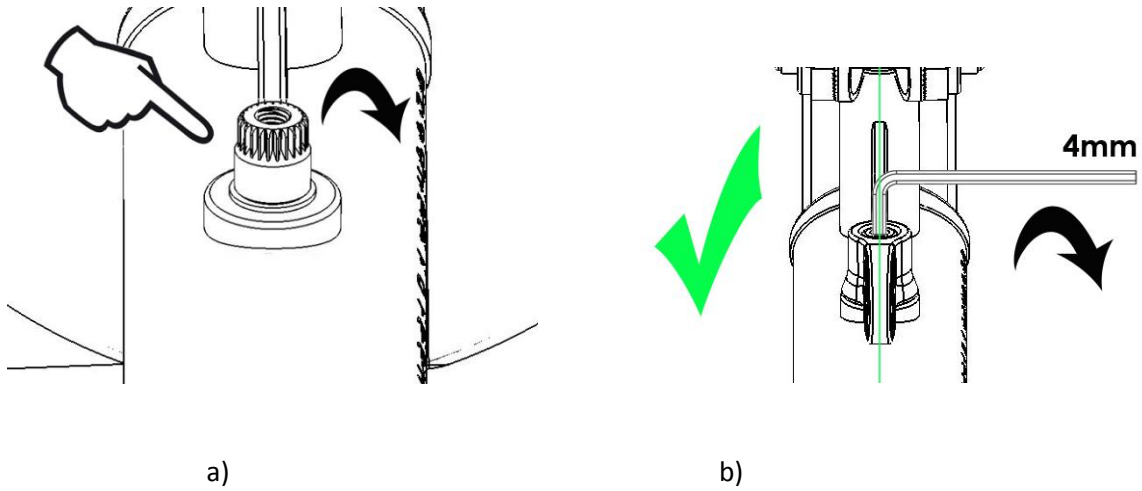
a)

### 3) New lever handle assembly

- a) Place the washer between upper seat post slider and adjustment bolt. Screw the new adjustment bolt in by hand.

**\*\*\* The T-nut and retainer spring situated between upper / lower slider will be reused.**

- b) Place the new lock handle onto the adjustment bolt, turn until final close position is reached, reposition the lock handle and tighten the upper bolt using the 4mm Allen key.



**ATTENTION! Never use force or over-tighten the lock handle.**

### 4) End of the operation

Check that the lock handle adjustment works properly.

